



LOGIWA WMS

EXTENDED PROFILE



OVERVIEW

Logiwa is a warehouse management software that specializes in cloud-based order fulfillment, inventory, and warehouse management.

With flexible and reliable warehouse software, Logiwa WMS assists businesses in retail, e-commerce, wholesale and 3PL industries.

With hundreds of successful implementations, Logiwa is the industry-leading warehouse management system that offers enterprise-level functionality to small and medium-sized businesses.

Logiwa WMS offers scalability by incorporating automation to improve warehouse efficiency, increase sales and reduce labor costs.

More information on Logiwa pricing plans and features can be found in our extended Logiwa software profile.

WHAT IS LOGIWA WMS?

Logiwa is a warehouse management software (WMS) built for businesses in e-commerce, retail, and 3PL offering a full suite of functionality to small and medium-sized businesses.

SOFTWARE SPECIFICATION

OVERVIEW	
PRODUCT NAME	Logiwa WMS
PLATFORM	
CLOUD	✓
INSTALLED	✗
BUSINESS SECTOR	
3PL	✓
MANUFACTURING	✓
RETAIL	✓
WHOLESALE	✓
PRODUCT TYPE	
PERISHABLE	✓
NONPERISHABLE	✓
SOFTWARE FEATURES	
BARCODING/SERIAL TRACKING	✓
BILLING	✓

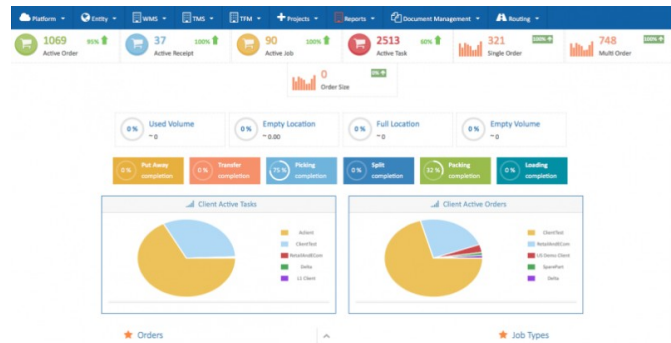
CROSS DOCKING	✓
FORECASTING	✗
INVENTORY MANAGEMENT	✓
KITTING	✓
ORDER MANAGEMENT	✓
PART TRACKING	✓
PICKING & PACKING	✓
PRODUCT ROTATION/SHELF LIFE	✓
PURCHASING	✓
REAL-TIME DATA	✓
RECEIVING & PUTAWAY	✓
REPORTING & ANALYTICS	✓
RETURNS/RECALLS	✓
SHIPPING MANAGEMENT	✓
STAGING	✓
THIRD PARTY PLUGINS	✓
WAREHOUSE MAP	✓
WIRELESS WAREHOUSE	✓
WORKFORCE/LOAD MANAGEMENT	✗
YARD MANAGEMENT	✗

PLUGINS/INTEGRATIONS	
AMAZON	✓
EBAY	✓
SALESFORCE	✗
QUICKBOOKS	✓
ERP	✓
OTHER ORDER MANAGEMENT PLATFORMS	✓
MICROSOFT DYNAMICS	✓
SAP	✓
MOBILE	
ANDROID APP	✓
IOS APP	✓
OTHER CAPABILITIES	✓
CUSTOMER SIZE	
SMALL	✓
MEDIUM	✓
ENTERPRISE	✓
OTHER FEATURES	
MULTI WAREHOUSE	✓
	✗

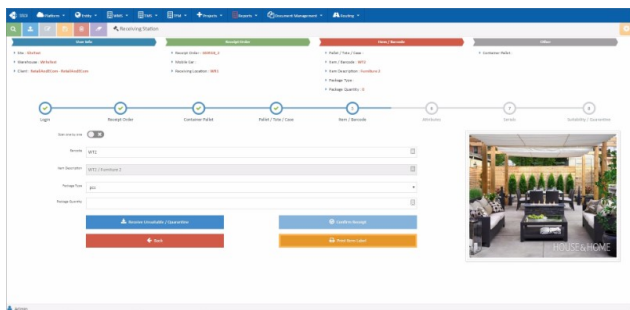
MULTI CURRENCY CUSTOMIZABLE	✓
FURTHER INFORMATION	
IMPLEMENTATION TIMEFRAME	5 Days to 30 days
PRICING	Subscription cost starting from \$99 per user / month. Setup and configuration starting from \$500 one-off cost.
PRICING	\$300 per user / month

SOFTWARE SCREENSHOTS





This is a 'Start Setup' form for a FedEx account. It includes a 'Warehouse' dropdown menu and a 'Start Setup' button. Below, there are input fields for 'Account Number', 'Password', 'Phone Number', 'Email Address', and 'Fax ID'. There are also checkboxes for 'Language' and 'Is Client Active?'. A 'Save' button is located at the bottom right.



Order Status	Channel	Carrier	Item to Ship	Order Code	Shipping Order	Cut Off Time	Tracking Number	Package Count	Carrier Label Printed	Qty
Open	Amazon	FedEx	100	1151		2pm			Open	100
Open	Amazon	FedEx	300	4156		2pm			Open	300
Open	Amazon	FedEx	350	4157	Pick - Open	2pm			Open	350
Open	Amazon	FedEx	400	4158		2pm			Open	400
Open	Amazon	FedEx	450	4160		2pm			Open	450
Open	Amazon	FedEx	500	4161		2pm			Open	500
Open	Amazon	UPS	550	4162		4pm			Open	550
Open	Shopify	UPS	600	4163		2pm			Open	600
Open	Shopify	UPS	650	4164		2pm			Open	650
Open	Shopify	UPS	700	4165		2pm			Open	700
Open	Shopify	Endicia	750	4166		2pm			Open	750
Open	Shopify	Endicia	800	4167		2pm			Open	800
Open	Shopify	Endicia	850	4168		2pm			Open	850
Open	Shopify	Endicia	900	4169		2pm			Open	900
Open	Shopify	Endicia	950	4170		2pm			Open	950
Open	Shopify	Endicia	1000	4171		2pm			Open	1000
Open	Shopify	Endicia	1050	4172		2pm			Open	1050
Open	Shopify	Endicia	1100	4173	Pick - Open	4pm			Open	1100